

Shop On-Line
www.coloradobagnbaggage.com

Shop Toll-Free
(888) 4EZ-BAGS

Corporate Sales
Special Corporate pricing is available on orders of 10 or more. Please visit one of our stores or call 303-382-6558.

Same-day Shipping!

If you're in a rush and need something fast, our products are in stock, and we will ship out the day you order!

Call Us!

If you would like to speak with one of our stores, or would prefer to order over the phone, please call us at: (888) 4EZ-BAGS. If you have a question about an order you have already placed, please call (888) 849-7367 x549.

Return Policy

Customer satisfaction is our top priority. We are happy to offer a full refund on all products returned within 30 days of the date the item was shipped. Some restrictions apply.

On the Cover

TUMI ALPHA 22" CARRY-ON

22022 Black **\$595.00**

COLORADO BAG'N BAGGAGE

Mail Order
2433 Curtis Street
Denver, CO 80205
www.coloradobagnbaggage.com

PRSR STD
U.S. Postage
PAID
Denver, CO
Permit No. 5144

Select items are not available at all Colorado Bag'n Baggage locations. Descriptions or typographical errors are subject to correction. Prices valid through December 31st, 2008. © Copyright 2008 Colorado Bag'n Baggage Company. All Rights Reserved.



Please respect the environment and
Recycle this Catalog.



TRAVELON

FREE
LUGGAGE SCALE
WHEN YOU PURCHASE \$100.


Customer must present coupon to receive free scale. \$9.99 retail value yours free with the purchase of \$100 or more.
Some restrictions apply.


THE GIVING BOOK



COLORADO
BAG'N BAGGAGE



 COLORADO
BAGGAGE CO

 BAG'N BAGGAGE

HOUSTON TRUNK

Mahm

FIND A STORE NEAR YOU!

BAG'N BAGGAGE

ARIZONA
 City Center of City North
 Phoenix, AZ 85054
 Opens 11.13.2008

Scottsdale Fashion Square
 Scottsdale, AZ 85251
 (480) 994-8092

CALIFORNIA
 Shops at Mission Viejo
 Mission Viejo, CA 92691
 (949) 347-2512

FLORIDA
 Aventura Mall
 Aventura, FL 33180
 (305) 792-1306

The Avenues
 Jacksonville, FL 32256
 (904) 363-0540

Coconut Point
 Estero, FL 33928
 (239) 498-2739

Dadeland Mall
 Miami, FL 33156
 (305) 669-6706

Mall at Millenia
 Orlando, FL 32839
 (407) 370-6681

Sawgrass Mills (Outlet)
 Sunrise, FL 33323
 (954) 835-0644

Town Center at Boca Raton
 Boca Raton, FL 33431
 (561) 447-4315

HAWAII
 Ala Moana Center
 Honolulu, HI 96814
 (808) 942-4998

NORTH CAROLINA
 Streets at Southpoint
 Durham, NC 27713
 (919) 484-7736

PENNSYLVANIA
 Court at King of Prussia
 King of Prussia, PA 19406
 (610) 265-2084

SOUTH CAROLINA
 Market Common
 Myrtle Beach, SC 29577
 (843) 828-0381

TEXAS
 Barton Creek Square
 Austin, TX 78746
 (512) 327-8725

Dallas Outlet
 Dallas, TX 75238
 (214) 355-3050

Galleria Dallas
 Dallas, TX 75240
 (972) 991-2664

The Galleria
 Houston, TX 77056
 (713) 629-8380

La Plaza Mall
 McAllen, TX 78503
 (956) 618-5512

Lincoln Park
 Dallas, TX 75225
 (214) 692-7275

North Star Mall
 San Antonio, TX 78216
 (210) 344-2344

Stonebriar Centre
 Frisco, TX 75034
 (972) 731-0441

The Woodlands Mall
 Woodlands, TX 77380
 (281) 367-0939

VIRGINIA
 Fashion Center at
 Pentagon City
 Arlington, VA 22202
 (703) 415-5123

COLORADO BAGGAGE CO.

COLORADO
 Cherry Creek Shopping Center
 Denver, CO 80206
 (303) 388-0900

Citadel
 Colorado Springs, CO 80909
 (719) 574-7404

Colorado Mills Outlet
 Lakewood, CO 80401
 (303) 922-3700

Downtown Aspen
 Aspen, CO 81611
 (970) 925-8777

Flatiron Crossing
 Broomfield, CO 80021
 (303) 466-6413

Foothills Mall
 Fort Collins, CO 80525
 (970) 282-9400

Park Meadows
 Littleton, CO 80124
 (303) 754-0101

Tabor Center
 Denver, CO 80202
 (303) 623-2121

Twenty Ninth Street Mall
 Boulder, CO 80301
 (303) 938-4047

MALM LUGGAGE

CALIFORNIA
 Crocker Galleria
 San Francisco, CA 94104
 (415) 392-0417

HOUSTON TRUNK FACTORY

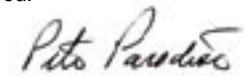
TEXAS
 The Galleria
 Houston, TX 77056
 (713) 961-3441

WELCOME TO COLORADO BAG'N BAGGAGE!

You know us as Bag'n Baggage, Malm Luggage, Houston Trunk Factory and the Colorado Baggage Company. We haven't changed; we just got a little bigger and a lot better when it comes to providing you with your travel wardrobe needs. Our philosophy of "fitting" your needs with outstanding products hasn't changed either!

Visit our stores and meet our experts and check out our offerings of luggage and business cases that will make your travel easier. Our experts know how to get you through the airline maze with ease. Whether you carry-on or check your bags, we can help!

Colorado Bag'n Baggage is also available by phone or on the web. You can reach us by calling 888-4EZ-Bags or on the web at www.coloradobagnbaggage.com. And, during this holiday season, when you shop with us, you will receive a luggage scale free of charge with any purchase over \$100. Just bring your copy of the catalog with you!



President, Colorado Bag'n Baggage

100% GUARANTEE - IF YOU ARE NOT 100% SATISFIED,
 PLEASE LET US KNOW AND WE WILL MAKE IT RIGHT.

Return Policy

Customer satisfaction is our top priority. We are happy to offer a full refund on all products returned within 30 days of the date the item was shipped. Some restrictions apply.

Same-day Shipping!

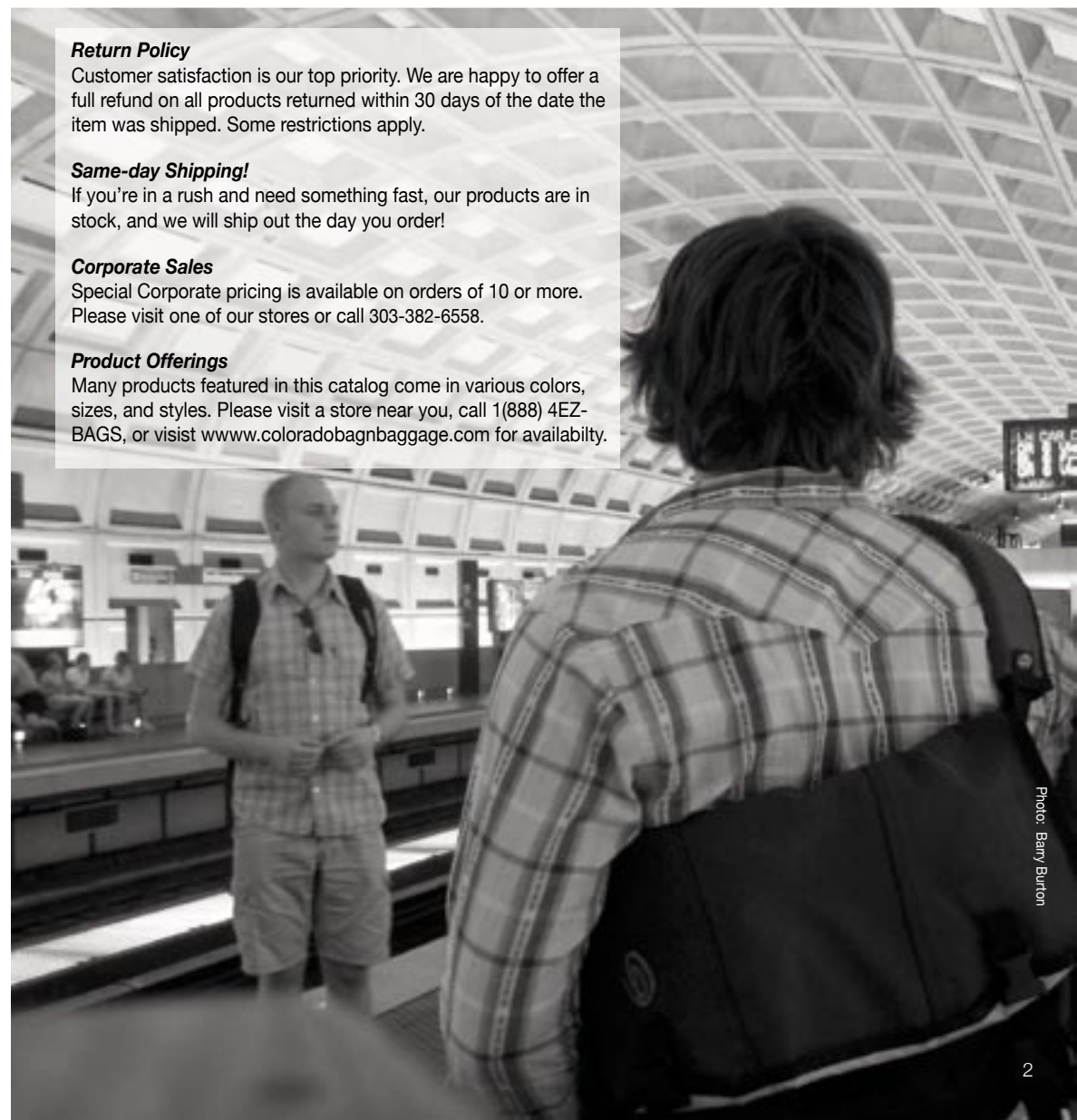
If you're in a rush and need something fast, our products are in stock, and we will ship out the day you order!

Corporate Sales

Special Corporate pricing is available on orders of 10 or more. Please visit one of our stores or call 303-382-6558.

Product Offerings

Many products featured in this catalog come in various colors, sizes, and styles. Please visit a store near you, call 1(888) 4EZ-BAGS, or visit www.coloradobagnbaggage.com for availability.



SHOP ON-LINE
WWW.COLORADOBAGNBAGGAGE.COM
 SHOP TOLL-FREE
 (888) 4EZ-BAGS



TUMI ALPHA TRAVEL COLLECTION

Tumi's Alpha is a landmark introduction incorporating 25 years of dynamic development in design and innovation. Alpha styles are lighter and more durable with superior materials, construction and overall design. With Alpha, Tumi continues to set the standard.

A. LONG WHEELED GARMENT BAG

This is Tumi's classic wheeled garment bag - only bigger. It features a hanger bracket at each end and comes with a Just in Case foldable tote.
22032BH Brown **\$895.00**

B. CONTINENTAL 20" CARRY-ON

With its shorter and wider configuration, this carry-on offers the packing capacity of a 22" case and fits easily in the overhead. Expands 2.5" and features a removable garment sleeve.
22021BH Brown **\$595.00**

C. ACCESSORY SATCHEL

This elegant carry-on offers a roomy interior with a mirror, elastic bottle loops, a snap-out zip pocket and the Add-a-Bag sleeve.
22155BH Brown **\$295.00**



A-B: Feature a removable, adjustable shoulder strap, a cushioned computer compartment, and rich, glove-tanned leather

TUMI ALPHA BUSINESS COLLECTION

Tumi's Alpha Business cases clearly and definitely demonstrate both Tumi's iconic style and ingenuity. Alpha Business exemplifies an ongoing ability to anticipate customers' needs and streamline the travel and business experience.



Includes a removable computer sleeve

A. ESSENTIAL LEATHER BRIEF

This smaller laptop brief is built to accommodate the essentials of modern business.
96130BH Brown Leather **\$495.00**

B. COMPACT LEATHER LARGE SCREEN COMPUTER BRIEF

Made from glove-tanned leather, this laptop case offers a slim silhouette for large screen users.
96114BH Brown Leather **\$450.00**

C. EXPANDABLE ORGANIZER COMPUTER BRIEF

A best seller! Expands a full 2" to accommodate your varying workloads. Made from Tumi's signature ballistic nylon.
26141BH Brown **\$350.00**





TUMI VOYAGEUR COLLECTION
The Voyageur Collection is crafted from lightweight-yet-durable nylon fabric with vachetta leather trim. Details include contrast stitching and leather-covered key locks.

A. CORTINA BOARDING TOTE
Bring your essentials on board with you in this stylish tote. The strap drop length is 10.5" from the shoulder.
48703 Black **\$395.00**

B. CAPRI CROSS BODY BAG
Perfect for travel or everyday use, the cross-body design offers an extra sense of security. Adjustable strap.
48785 Black **\$150.00**

C. 22" RAVELLO FREQUENT TRAVELER WHEELAWAY
This is one case every traveler should have. Includes an expandable main compartment for longer trips.
48722 Black **\$595.00**

D. BERLIN WHEELED BUSINESS CASE
This full-feature, wheeled computer business case is ideal for the air traveler.
48711 Black **\$595.00**



Includes a removable accordion file, and mesh accessories pouch



TUMI TOWNHOUSE COLLECTION
Townhouse is a travel and business collection for the world's most sophisticated consumers. The designs incorporate classic styling and old world craftsmanship with advanced technology in the best leathers and fabrics. Townhouse elevates Tumi's heritage of design excellence to a new standard.

A. 22" EATON WHEELED PACKING CASE
An elegant, yet hardworking design for the frequent traveler. Expands when needed, and includes a removable garment sleeve.
24002D Black **\$1,295.00**

B. YORK BRIEFCASE
This deluxe, satchel-style brief has two leather flap pockets for accessories. Features include a removable neoprene laptop sleeve, organizer panel, and a removable shoulder strap.
24210D Black **\$695.00**



B & C: Four-wheel system with a foot brake for easy maneuvering



TUMI T-TECH POLYCARBONATE COLLECTION

Sleek sophistication for the modern traveler. Made from three layers of polycarbonate, this collection combines advanced technologies to offer the most durable and lightweight alternative to traditional luggage. Strong, light and flexible.

A. 22" TWO-WHEEL FREQUENT TRAVELER

The ultimate in convenience and sleek, modern design. Packed with great functional features and Tumi engineered components.

5702SLV Silver **\$395.00**

C. 25" FOUR-WHEEL MEDIUM TRIP

The perfect medium. The high-gloss finish offers a distinctively sleek design.

5705D Black **\$450.00**

B. 28" FOUR-WHEEL EXTENDED TRIP

The largest case in the collection, this trolley is perfect for an extended trip. The four-wheel system has swivel wheels for easy maneuvering and a convenient foot brake.

5708SLV Silver **\$495.00**



TSA integrated lock



Removable garment sleeve, and adjustable tie-down straps



High-performance, end bound wheels with contoured treads

A,B & C: Numerous interior pockets keep you organized



Featuring X-Tech, a soft, abrasion resistant material, the ultimate in durability

TUMI T-TECH ADVENTURE COLLECTION

Rugged performance gear for today's adventure seeker. Whether you travel uncharted territories or navigate the urban jungle, make it an adventure. This collection of travel and business designs are made from Tumi's exclusive X-Tech fabric that is ultra-durable, abrasion-resistant and soft to the touch.

A. MEDIUM BODY BAG

This super slim design can be worn over the shoulder or across the body - perfect for travel, city or everyday use. Adjustable shoulder strap.

57034 Grey **\$75.00**

B. SLIM MESSENGER

This may be the perfect messenger for work, school or travel - it's organized, slim and expandable. Adjustable shoulder strap.

57012 Blue **\$165.00**

C. SMALL FLAP BODY BAG

This tall, slim design functions like a messenger or a tote, and can be worn across the body or over the shoulder.

57035 Red **\$135.00**

D. WHEELED 22" FREQUENT TRAVELER

One of the best-selling carry-on styles among business travelers. Expands a full 2" for extra space when you need it and has a removable garment sleeve.

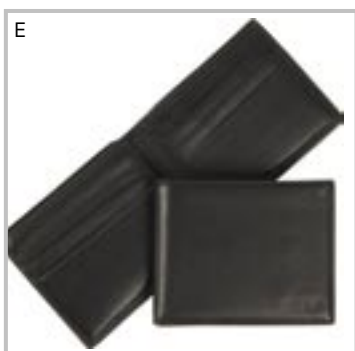
5722D Black **\$395.00**

Side and bottom handles make getting this bag in and out of the overhead easier



INTERNATIONAL TRAVEL

IS NOW EASIER WITH THE INNOVATIVE DESIGN OF TUMI ELECTRONICS



TUMI MERIDIAN COLLECTION

Tumi's Meridian Collection is crafted from soft, smooth napa leather with European turned-edge construction, hand-pleated corners and signature fabric lining.

A. PASSPORT CASE

Features a passport compartment, I.D. window, currency compartment and card slots.

17371D Black Leather **\$98.00**

B. SLIM CARD CASE I.D.

Features an I.D. window and credit card slots.

17359D Black Leather **\$38.00**

C. ULTIMATE TRAVEL ORGANIZER

Features a passport, ID, ticket, coin and other pockets. 17 card slots, 3 currency sections and pen holder.

17376D Black Leather **\$158.00**

D. L-FOLD I.D. WALLET

Features a leather interior, six credit card slots, I.D. window and bill compartment.

17350D Black Leather **\$88.00**

E. DOUBLE BILLFOLD

Features two bill sections and eight credit card slots.

17333D Black Leather **\$78.00**

A. ELECTRIC ADAPTOR

This innovative adaptor design has 4 different plug types that fit into electric wall sockets in 150 countries. Works with laptops, cell phones and small appliances. Replaceable electric fuse and convenient case included.

14360D Black **\$50.00**

B. UNIVERSAL POWER ADAPTOR KIT

This is the ultimate power tool for mobile computer and electronics users! Compact and lightweight, it allows you to use a wall, automobile or airline connection to charge all your electronics. Foldable carrying case and user tips included.

14352D Black **\$195.00**

C. MOBILE POWER PACK

Charge your electronic devices anywhere! This power pack plugs into a wall socket to get charged, then travels with you with enough power to recharge your phone, MP3 player, PDA. Works with most electronic devices.

14362D Gun Metal **\$135.00**





25% OFF

Your Second Item When You Buy Any Wheeled Item From Victorinox® Travel Gear

Visit www.ColoradoBagnBaggage.com or visit a store near you for details.

Valid 10.30.08-12.31.08

VICTORINOX TOURBACH™ COLLECTION

Victorinox Swiss Army Tourbach™ technologies are designed to keep you in motion, on track and in style. This highly functional travel gear strikes a balance between performance and service with the TLC Program and Carry With Confidence™ Plus Guarantee, which protects your travel gear from taxi to takeoff. Tourbach™ is high-performance gear designed to match your high-performance life.

A. 22" EXPANDABLE WHEELED UPRIGHT

This case is expertly engineered to deliver impressive functionality and durability. The front gusseted pocket is sized to fit a 15" laptop. A removable full suiter included.

3173 Black **\$595.00**

B. BOARDING TOTE

Perfect for the light traveler, this tote has a large main compartment and lots of organizational pockets. Aluminum feet help stabilize and keep the bottom clean.

3170 Black **\$295.00**



VICTORINOX ARCHITECTURE™ 2.0 COLLECTION

The Architecture™ 2.0 Collection is designed for a new era in business with intuitive organization, unsurpassed protection and convenient mobility. Bold lines and rich styling communicate the desire of today's business venue, from Main Street to Madison Avenue.



Leave your laptop in the dedicated storage area and fly through security



A. BIG BEN WITH SECURITY FAST PASS™

Not the usual kind of casual. This backpack has some seriously savvy features, including a built-in Aero Sleeve™ padded computer pod, and a book-style opening that allows the bag to lay flat during security x-ray screenings.

30326601 Black **\$279.00**

B. WAINWRIGHT 15" ATTACHE

This classic brief holds a few smart surprises. Behind the understated silhouette you'll find a padded main compartment – perfect protection for a laptop and several files.

30321901 Black **\$169.00**

C. PARLIAMENT 15" EXPANDABLE BRIEF

An air of authority. This over-the-shoulder brief features a removable Aero Sleeve™ padded computer pod, a legal-sized fan file system.

30322701 Black **\$299.00**

D. TREVİ WITH SECURITY FAST PASS™ (OPPOSITE PAGE)

Make a flawless first impression with this beauty of a brief. The book-style opening allows the bag to lay flat during security x-ray screenings to get you through security faster.

30326501 Black **\$259.00**



C



A host of convenient pockets to help organize your gear.

VICTORINOX ALTIUS™ 2.0 COLLECTION

Altius™, the Latin term for "higher," captures the pursuit of excellence embodied by Victorinox and brought to life in the Altius™ Collection. Featuring full grain leather with a soft, supple hand and an elegant Victorinox emblem, this collection demonstrates our commitment to superior quality and design, even in the smallest details.

A. CORTINA ZIP AROUND TRAVEL DOCUMENT HOLDER

30305701 Black Leather **\$120.00**

B. OSLO PASSPORT CASE

30305501 Black Leather **\$70.00**

C. ATHENS BASIC TRI-FOLD

30305401 Black Leather **\$70.00**

D. MONTREAL SLIM CARD CASE WITH ID WINDOW

30305001 Black Leather **\$35.00**

E. BERLIN BI-FOLD WITH REMOVABLE ID CASE

30305601 Black Leather **\$85.00**

F. BARCELONA BASIC BI-FOLD

30305301 Black Leather **\$65.00**



B

C

D

A

E

F

D



Fly through security checks with the Security Fast Pass™



NEW
SILVER
GRAPHITE



VICTORINOX WERKS TRAVELER™ 3.0 COLLECTION

The newly redesigned Werks Traveler™ 3.0 Collection is 30% lighter than typical wheeled bags and now has 30% more packing capacity than other uprights in its class. The ergonomic handle system rotates for “palm facing body” position capability. The add-a-bag features include a Never Lost Attach-a-Bag strap and the new SimpleStrap™ Bag System for consolidated travel. Carry With Confidence™ Warranty.

A. WT WHEELED DUFFEL

In for the long haul? This deep 31” duffel can pack plenty. The large U-shaped opening uncovers a cavernous main compartment that’s a breeze to load.

30300705 silver/graphite
WAS ~~500.00~~ **NOW \$299.99**

B. WT-22

This expandable upright is a travel triumph. Features a hanging mesh pocket, a removable garment suiter with foam bolsters to reduce wrinkling, and a quick-release clip that secures up to four hangers.

30300105 silver/graphite
WAS ~~500.00~~ **NOW \$299.99**

C. WT WHEELED TOTE

This wheeled tote loves to come along for the ride, giving you access to your essentials whenever you need them.

30301705 silver/graphite
WAS ~~335.00~~ **NOW \$199.99**

D. WT TOTE

Perfect for weekend trips or paired up with other luggage pieces, this tote knows just how to handle your stuff.

30300405 silver/graphite
WAS ~~170.00~~ **NOW \$99.99**



VICTORINOX MOBILIZER NXT® 4.0 COLLECTION

The new generation of Mobilizer NXT® 4.0 exemplifies classic lines and rugged durability. Through a combination of tough, resilient materials, cutting edge packing functionality and refined style, that is as strong and sophisticated as the person carrying it, making it best-in-class.

A. TROOPER DUFFEL

This duffel is light weight, easy to use and has a place for your water bottle. Need an extra hand? It will slip over the handle of your Mobilizer upright.

30378201 Black WAS ~~190.00~~ **NOW \$129.95**

B. MOBILIZER® 22

This upright showcases an expandable main compartment, while the zip-in suiter with foam bolsters helps formal apparel reach its destination with fewer wrinkles.

30340101 Black WAS ~~575.00~~ **NOW \$399.99**

SpeedThru™

Most @work briefs feature a TSA friendly Removable Laptop Sleeve and a SpeedThru™ pocket for hassle-free security checks



2.5" expansion

@work

@WORK COLLECTION

Today you need a bag that works any day, anywhere—just like you. The durable @work collection from Briggs & Riley is designed to keep up with you and keep you organized. So you can always carry—and find—just what you need to get the job done.

A. SLIM COMPUTER BRIEF

Slim and lightweight, this bag allows you to bring your laptop without slowing you down.
BB101 Black **\$159.00**

B. EXPANDABLE COMPUTER BRIEF

The Expandable Overnight Computer Brief organizes accessories, laptop and files and has a 2.5" expansion for packing clothes.
BB104X Black **\$219.00**

C. ROLLING EXPANDABLE COMPUTER CASE

Perfect for those overnight business trips. This bag will keep you organized with pockets for accessories, laptop, and files.
BR212X Black **\$379.00**



BRIGGS & RILEY BASELINE COLLECTION

The Baseline Collection combines modern design with leading-edge performance. The collection is designed to complement your style and engineered to exceed your needs. Pack flat with the Outsider® handle for less wrinkles. And with the industry-best lifetime warranty, these bags are built to last.

A. WHEELED WARDROBE

For the traveling executive, this ultimate wardrobe offers optimal organization and packing capacity. With countless features to get you from point A to B wrinkle-free, this case is perfect for a 6-8 day business trip.
U378 Black **\$579.00**

B. DELUXE TRAVEL TOTE

Designed to carry everything you need in an easy-pack, organized tote. A dual purpose back pocket allows the bag to slide over the Outsider® handle for fast, convenient travel.
221 Black **\$159.00**

C. EXECUTIVE TOILETRY KIT

This smartly designed kit is a top performer. The waterproof main compartment keep leaks from spreading. A top mesh pocket allows you to easily organize and identify contents.
114 Black **\$49.00**



BRIGGS & RILEY

TRAVELWARE



*Lighter weight
for easier getaways*

BRIGGS & RILEY TRANSCEND COLLECTION

Briggs & Riley Transcend is a luggage collection highlighted by progressive style and manufactured with lightweight materials. Like all Briggs & Riley products, every Transcend piece is covered by the Briggs & Riley lifetime performance guarantee. Simple as that®.

A. 29" WHEELED DUFFEL

Lightweight yet sturdy, this case is great for an extended getaway. With its handle system and wheels mounted on the exterior of the bag, the interior packing surface is flat for wrinkle free packing, and its capacity is maximized.

TD UD529 Sunset **\$309.00**

B. 24" EXPANDABLE UPRIGHT

Pack and Go! This upright makes packing easy offering a 3" expansion. Pack for a 3-6 day trip and bring 2-3 hanging items.

TD U524X Rainforest **\$329.00**

C. ROLLING TOTE

Escaping for the weekend? With the ability to fit under an airline seat and the large U-Shaped opening on its main compartment, this tote is a popular choice for people who need easy access to personal items during flight.

TD U325 Rainforest **\$225.00**

D. SHOPPING TOTE

Travel around town or to unfamiliar lands with this tote. Features include leather shoulder straps, and a slip-through back pocket that allows the tote to slide over the Outsider® handle.

TD 357 Sunset **\$139.00**



*Lifetime performance
guarantee even covers
airline damage*

JOHNSTON & MURPHY



DIVIDENDS™ COLLECTION

The Dividends Collection is a modern classic, incorporating soft, vegetable tanned leather with smooth, waxhide leather trim, handcrafted details and unique functional design.

A. SLIMLINE FLAP BRIEFCASE

Main compartment features aero mesh padded panel for computer, two accessory pockets and a double file folder section.

46-15061 Black **\$425.00**

B. 17" SLIMLINE BRIEFCASE

A full-zip main compartment includes aero mesh padded panel to accommodate a 17" laptop.

46-15031 Black **\$425.00**

C. ULTRA SLIMLINE BRIEFCASE

A single, full-zip main compartment features aero mesh padded panel for a computer, two accessory pockets and an organization panel.

46-15011 Black **\$375.00**

J&M COLLECTION

The Johnston & Murphy collection is characterized by its style, quality and durability. Crafted of rich, vegetable or chrome tanned full-grain leather, this signature collection is class to the core.

A. LETTER FOLIO

Complete with 8.5"x11" notepad. Opens to thumb-slide ID window, four card slots, two slip pockets and in-spine pen holder.

46-25018 Mahogany **\$98.00**

B. TRIFOLD WALLET

Slide-in design holds one or two passports. Inside card pocket and outside curved receipt/card pocket.

46-12083 Mahogany **\$48.00**

C. WEEKENDER CASE

Thumb-slide ID window, three card pockets and center multi-purpose compartment for folded cash.

46-12088 Mahogany **\$25.00**

D. SUPER SLIM WALLET

Six card pockets, thumb-slide ID window, full currency pocket and outside curved receipt/card pocket.

46-25101 Mahogany **\$42.00**





INSPIRED BY TRAVEL™



Inspired by Travel.

EAGLE CREEK PACK-IT® COLLECTION

Being organized isn't as geeky as it sounds. Pack-It® System liberates you from accumulated hours otherwise spent fruitlessly searching for one item after another. Use the system to keep items organized within big bags or in small bags to keep clothes wrinkle-free.

A. PACK-IT® 18 INCH FOLDER

Travel wrinkle-free! Holds between 8-12 shirts or pants and fits into most carry-ons. Features stain and water resistant Antron lining and includes a folding board with instructions.

40154 Merlin Purple **\$25.00**

B. PACK-IT® HALF CUBE

These cubes have a see-through mesh lid that makes them perfect for storing items that don't wrinkle, like t-shirts and socks.

40151 Merlin Purple **\$10.00**

C. PACK-IT® CADDY

The just-right-size toiletry kit is ideal for a long weekend and fits perfectly into your carry-on. Includes a stow-away hanging swivel hook and stain and water resistant Antron lining.

40384 Merlin Purple **\$30.00**

D. PACK-IT® TUBE CUBE

The tube is great for socks, underwear, t-shirts, ties, belts, etc. Spill-proof mesh liner keeps damp items like toothbrushes and shave kits separate.

40376 Merlin Purple **\$12.00**



Zip-off backpack includes tote handle and concealable backpack straps for comfortable carry

EAGLE CREEK EXPLORATION SYSTEMS COLLECTION

Travel around the world and back again with the most durable and functional gear on the planet. Eagle Creek's Exploration System is lightweight and technical; packed full of organization, innovation, adventure and wanderlust. The Exploration System is designed to meet the specific demands of a world traveler. Every detail is designed to be comfortable, durable and lightweight.

A. ROLLING TOTE

Easily make your way through busy airports and crowded train stations with the functional and maneuverable wheeled tote.

20205 Palm Green **\$190.00**

B. 19" TARMAC PLUS ONE

The unique, versatile Tarmac Plus One is a compact, carry-on size rolling suitcase with a detachable daypack that is padded to accommodate a laptop computer that slips over the handle.

20204 Palm Green **\$275.00**

C. 25" EXPANDABLE TARMAC

This spacious rolling suitcase is large enough to hold several weeks worth of gear, while still remaining maneuverable and easy to manage. Built-in shoe box and stash cache.

20202 Palm Green **\$295.00**



Mesh lid for visibility and breathability

Eagle Creek's Exploration Systems collection is available at select stores and www.coloradobagnbaggage.com. Please check the website or call a store for more details.



Photo: Alexander Nesbitt

A



Leather is treated to last long



Inspired by Travel.

EAGLE CREEK CENTERLINE COLLECTION

Centerline Luggage is some of the lightest wheeled luggage on the market, and also some of the most durable. The sturdy "off-road" wheels are designed to handle all sorts of obstacles and keep rolling smoothly, while the bag itself is made of three kinds of high-tech fabric, with the strongest material at the points on the bag that get the most stress and wear.

A. 22" HOVERCRAFT

This case is designed to be the maximum allowable carry on size, and it can expand if you need a little more space. One of the lightest cases you can find, yet still incredibly durable. (pictured above)

20187 Graphite **\$200.00**

B. 30" LOAD WARRIOR

It's big, it's durable, and with the oversized Off Road Wheels and Soft Touch handle system, it'll make carrying loads a breeze.

20143 Graphite **\$200.00**

C. WHEELED BOARDING TOTE

With plenty of space for short overnight or weekend trips, this compact tote bag on wheels is still small enough to fit under the seat on an airplane.

20193 Graphite **\$150.00**



B

C

BRIC'S LIFE COLLECTION

What makes a Bric's Life piece so special? Starting with a special PVC material, Bric's adds a special flock coating of cotton and viscose. The material is then treated with a special process called "bottolatura" which is a typical leather treatment. The result - a beautiful, long-lasting, water-proof fabric available in a variety of colors.

A. 27" TROLLEY WITH SUITER

Perfect for 5-7 day trips, this trolley will get you to your destination wrinkle-free. Includes a removable shoe pocket.

BLF01172 Olive **\$895.00**

B. 22" DUFFEL

Bric's most popular item, this stylish weekend duffel is great for short casual trips.

BLF00202 Olive **\$375.00**

C. 21" CARRY-ON ROLLING DUFFEL

This versatile carry-on includes a removable shoulder strap, top and side carry handles, and in-line skate wheels for smooth rolling.

BLF02510 Olive **\$495.00**



RIMOWA SALSA DELUXE COLLECTION

Rimowa Salsa Deluxe luggage never gets bent out of shape. The nearly indestructible polycarbonate cases return to their original shape automatically as soon as the pressure is released. In this way, Salsa combines the casualness of softside luggage with the dependability of hardsided suitcases. Plus, a Rimowa suitcase is as light as a feather! A Rimowa suitcase—true innovation you can take with you wherever you go with ease on four wheels.

A. 32" FOUR WHEEL TROLLEY

898.83 Chocolate **\$625.00**

B. 29" FOUR WHEEL TROLLEY

898.82 Chocolate **\$575.00**

C. 26" FOUR WHEEL TROLLEY

898.81 Chocolate **\$550.00**

D. 22" FOUR WHEEL TROLLEY

896.67 Chocolate **\$525.00**

**E. 29" FOUR WHEEL TROLLEY
(opposite page)**

869.70 Prosecco **\$550.00**



**WHEN YOU HAVE THE BEST QUALITY,
EVERYBODY WANTS A PIECE OF YOU.**

EVERY CASE TELLS A STORY

NEW

hartmann

EST. 1877

SPECIAL PURCHASE

WITH THE PURCHASE OF ANY NEW TWEED MOBILE TRAVELER, RECEIVE THE 21" CARRY-ON DUFFEL FOR A SPECIAL PROMOTIONAL PRICE OF \$299.99. NORMAL RETAIL IS \$475 - YOU SAVE \$175!
Valid 11.1.08-12.31.08.



HARTMANN NEW TWEED COLLECTION

For those with an appreciation of traditional elegance, the Tweed™ Collection from Hartmann has proven that classic design, durable materials and high quality craftsmanship never go out of style. Crafted from custom-woven highly resilient nylon tweed, this fabric is easy to care for, maintains its shape, color and strength, and is scuff resistant. Trimmed with Aged Belting Leather, this collection is signature Hartmann.

A. COSMETIC TOTE

The water resistant interior lining avoids permanent stains. The organizational panel will keep your business cards, cell phone, pens, etc. in order.

480 1050 Tweed **\$375.00**

B. 27" EXPANDABLE MOBILE TRAVELER

This case features a push-button locking handle system, extremely durable in-line skate wheels and a patented Baggage Link quick-clip strap.

480 3570 Tweed **\$895.00**

C. 22" EXPANDABLE MOBILE TRAVELER

Expands 2 inches for additional packing space, TSA-friendly clear plastic zip pouch with bottles, wrinkleless suit fixture, and TSA approved combination lock.

480 3520 Tweed **\$695.00**

D. 21" CARRY-ON DUFFEL

A large capacity main compartment with u-shaped zip opening makes this bag easy to pack. Removable, adjustable leather shoulder strap.

480 1121 Tweed **\$475.00** or **\$299.99** with the purchase of any new Tweed Mobile Traveler.

HARTMANN NEW AGED BELTING LEATHER

The J Hartmann Reserve Collection represents the pinnacle of refined style and superior quality. Aged Belting Leather, derived from North American native steer hides, is struck through for a consistent color. This special leather, synonymous with Hartmann, is pre-aged to a beautiful patina; yielding superior abrasion resistance and incredible durability.

A. TRAVEL I.D. CASE

Features an I.D. window, credit card pocket, and slash pocket with full length zip pocket on back.

490 737 Natural **\$75.00**

B. ALL-IN-ONE WALLET

With a money clip on the front, an ID window in the back, and 5 credit card pockets on the inside, this wallet has everything you need without the bulk.

490 733 Natural **\$55.00**

C. GUSSETED CARD CASE

In addition to the I.D. window, and card pocket, a gusseted compartment allows you to fit more.

490 707 Natural **\$50.00**

D. PASSPORT COVER

Keep your personal travel items safe with this case. Includes pockets for various travel items.

490 710 Natural **\$45.00**

E. CALLING CARD CASE

Made of ultra-durable Belting Leather, this case has plenty of slots for cards.

490 720 Natural **\$30.00**

F. TRIFOLD WALLET

Features a full length compartment for bills, four credit card pockets, three slash pockets for additional items, and an I.D. window.

490 703 Natural **\$75.00**



Ultra-durable Belting Leather will stand the test of time.





A

B



C

D

KIPING CORE COLLECTION

Kipling luggage and bags are a “must have” item among anyone with both a fashion conscious and an adventurous spirit. Stylish, colorful and fun, these bags are also exceedingly functional. Kipling has even become a favorite among celebrities and has also been featured on many top-rated television programs.

A. 31” CAMOSO WHEELED DUFFLE

This trolley surprises you with its ingenious design and volume. A foldable and compact structure allows you to reduce the case to a small volume and store it in the smallest places.

WL3536 Espresso **\$350.00**

B. ALCATRAZ

Able to be wheeled or carried backpack style. Innovative features allow for use as carry-on luggage or a back-saving solution for students with a heavy homework load.

WL2027 Espresso **\$188.00**

C. YAZU L DUFFLE

With 2 big zipped compartments, the Yazu combines the benefits of a lightweight bag with the assets of a suitcase.

SL3531 Espresso **\$118.00**

D. DEFEA MEDIUM HANDBAG

A proven bestselling handbag which can also be worn as a shoulder bag or across the body.

HB3170 Espresso **\$78.00**



E

F

G

H

I

E. NEW YORK 22” EXPANDABLE WHEELED LUGGAGE

This expandable carry-on piece fits your every travel occasion - business trips or vacation hot spots! Will express you with its volume, durability and lightweight design.

WL2409 Red **\$225.00**

F. ETTA 16” CARRY ON TOTE

This versatile and durable bag can go anywhere. To school, to the gym, to a friend’s overnight. Toss in your books, magazines, makeup, cell phone and more - there’s room for everything you need... and then some!

SL3713 Red **\$128.00**

G. CANYON 30” WHEELED DUFFEL

Glide effortlessly through airports and train stations. The perfect solution for stylish, stress-free travel is ready to roll. Plus, it collapses and stores flat when empty. Small apartment dwellers rejoice!

WL2066 Black **\$250.00**

H. NEW RITA MEDIUM SHOULDER BAG

Sporty and stylish messenger-style shoulder bag for independent gals, to be worn either over the shoulder or across the body.

HB3265 Red **\$72.00**

I. CLASP WRISTLET CLUTCH

Tired of searching the bottom of your bag for your checkbook and loose change? Have no fear. This efficient wallet organizes your life for you.

AC3709 Black, Red **\$44.00**



Snatchproof anchor clip



Tamperproof Zipper



Slashproof shoulder strap



eXomesh® Slashguard panel

PACSAFE CITY SAFE 100 COLLECTION

The CitySafe 100 is a fashionable and well-organized handbag equipped with 4 anti-theft features, including the patented eXomesh™ stainless steel mesh slashguard and slashproof, adjustable shoulder strap. Travel safely. Travel in style.

Black: 2400 Taupe: 2401 Red: 2402. **\$54.95**

✓ SLASHPROOF ✓ SNATCHPROOF ✓ TAMPERPROOF



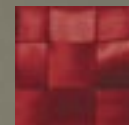
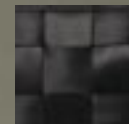
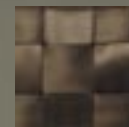
BAGGALLINI BERKSHIRE BAGG

The most versatile bag ever. Use it as a tote bag or detach the lightweight handbag and use it by itself. Made of durable, lightweight, water-resistant nylon. The small handbag on the front easily unclips from its attractive metal hardware and features a 52" adjustable shoulder strap. Both handbags are packed full of organizational pockets.

BEC384 Khaki, Black **\$109.95**



HARVEYS™



HARVEY'S SEATBELT BAG®

Strong enough to keep your valuables safe, yet easy to open and close. Each Seatbelt Bag is lined with genuine flight satin, used by the U.S. Air Force to make flight jackets and sewn with NASA certified thread. It's resistant to stains, spills and tears and all interior pockets are reinforced with red bar-tack stitching.

MEDIUM TOTE ZIP Red: 4202-601, Brown: 4202-207, Black: 4202-001. **\$104.00**

TIMBUK2 HIDDEN BAG SERIES



Fold it, pack it, carry it around! Strong, stylish, colorful little bags that make you look cool carrying anything home from the store. Do it for the earth, do it because these little rip stop bags are hip and are also made of 90% recycled fabrics. Yes, they are strong, funky, colorful, and totally impressive.

A. HIDDEN TOTE 731-4-353 **\$22.00**

B. HIDDEN BROWN BAG 736-4-445 **\$20.00**

C. HIDDEN BACKPACK 734-4-419 **\$28.00**

A-C Assorted colors: Future Pink, Slate, Starlet, Kelly Green, Khaki, Black, Gold



A. X1 COMPACT UMBRELLA

When it rains, this Knirps really shines! A surprisingly large canopy appears, made of densely woven microfibres, and after use, it dries instantly.

89-811-315 Orange **\$48.00**

B. T2 DUOMATIC UMBRELLA

This pocket umbrella features an automatic opening and closing mechanism. It's ultra-light, extremely stable, and easy to fold and repack.

89-878-713 Dundee Print **\$58.00**



BLOOMSBURY COLLECTION

Keeping up appearances with the hottest new look is essential and with knomo's new Bloomsbury range, laptop toting fashionista's everywhere are in for a treat. With bold, quilted designs in pop colors, and patent leather trim for biker-chic edginess, these work bags double-up as a sexy evening bag and can easily take you from lunch meeting to dinner date.

A. SERRA WHEELED BRIEF

Sick of lugging around a heavy briefcase to and from work? You're in luck with this lightweight rolling brief that puts the fun into function. The Serra brief's quilted design is fashionable and protective, so you needn't sacrifice style for professionalism. Holds up to a 15.4" screen laptop.

17-600 Black **\$295.00**

B. SLIM BAG WITH STRAP

This ultra light Slim bag is handcrafted from full hide leather and nylon twill quilting to protect your 15" laptop from any knocks or bumps. Easily fits into a larger bag.

15-059 Fuchsia, Grey, Blue **\$98.00**





A-B: An interior organizer panel with Blackberry, card and pen slots will keep your belongings in order

LODIS COLLECTION

For those who appreciate style and efficiency, we recommend these European-inspired accessories crafted in luxurious crocodile pattern. Lady-like, sophisticated, warm and elegant - all your best attributes reflected in your accessories.

A. BRERA COMPUTER BRIEF

Carry your laptop in style! This brief features a 15.5" padded laptop compartment and a detachable shoulder strap.

614 592MZ Cranberry **\$335.00**

B. MILANO TOTE

Tote your laptop around safely with the 15" padded "hidden" laptop compartment.

614 553MZ Cranberry **\$325.00**

C. ZIP PORTFOLIO

Professional and sleek. This portfolio holds everything safely with its zip closure. Features an organizational panel.

614 977MZ Cranberry **\$169.00**



Includes an 8.5"x11" notepad, pen loops, card slots, phone pocket, and full length zippered pocket

BOSCA AMERICAN NAPPA COLLECTION

For nearly 100 years Bosca has been making the finest quality leather products available anywhere. Renowned for originality and quality, Bosca's wide range of luxury goods introduce the heart and soul of Italy to an American Aesthetic.

A. DOUBLE ZIP KIT

A large top flap zippers open which makes everything in the bag visible. It's many features make it more than just a toiletry bag.

573-251 Black **\$96.00**

B. FLAP OVER BRIEF

Carry all your business essentials in this beautifully crafted American Nappa leather brief. Removable padded shoulder strap.

830-251 Black **\$300.00**

C. DOWEL BAG

Made of American Nappa leather, this case features an internal pocket with an organizational suite, and includes an adjustable strap.

825-251 Black **\$325.00**



Beautifully crafted from American Nappa leather



JACK GEORGES COLLECTION

In today's world of mass production, it's rare to find quality leather products made the old fashion way - by hand! With three generations of experience, Jack Georges creates his products with style, design, and function.

A. VERTICAL LAPTOP BRIEF

The vertical orientation of this case allows it to fit through the aisle of an airplane cabin. Hand crafted from durable scratch and stain resistant Italian leather. Fits up to a 15.4" screen.

3854 Cherry **\$320.00**

B. LAPTOP WHEELED BRIEF

This laptop compatible wheeler is hand crafted from European leather that is known for its durability, strength, and scratch resistance. A padded compartment holds up to a 17" screen laptop.

4857 Cognac **\$399.99**



A

B

LEATHER TOILETRY KITS

Ideal for a long weekend! Carry all your necessities in style and with ease with these handsomely crafted toiletry kits in brown or black.

A. SADDLE FRAMED KIT

08-926 Brown **\$70.00**

B. ADMIRAL DOPP KIT

6-952 Black **\$60.00**

Carry all your necessities with ease



A

B



A



TRAVEL WITH EASE

A. BALANZZA DIGITAL LUGGAGE SCALE

This lightweight scale (0.5 lb) can hold up to 100 lbs. The ergonomic design allows for an easy grip, and protects your luggage by utilizing a strap rather than a hook. Includes 2 AA batteries. Auto shut-off.

BZ200 Green **\$26.00**

B. NO-JET-LAG TABLET

No-Jet-Lag is a unique homeopathic remedy developed to alleviate body stress and fatigue due to disruptions to the body's clock rhythm, and has no known side effects. Each package contains 30 tablets, enough for 40 hours of flying.

NJL **\$12.00**

C. POLKA DOT LOCK AND TAG SET

There will be no mistaking your bag when it sports this whimsical polka dot tag and TSA-approved lock.

BH74 Dot **\$13.00**

D. NECK PILLOW

Sink your neck and head into this soft support and turn sitting into a luxurious experience, wherever you happen to be.

BC7008 Pink **\$13.00**



B



C

It's OK To Lock Your Luggage!



D

